

## Site Planning Exercise

1

Centre for Environmental Training cet

## Recommended Procedures

- Assess need for and extent of works
- Initial site assessment
- Determine timing of works
- Control water movement in and around site
- Select erosion control measures
- Select sediment control measures

2

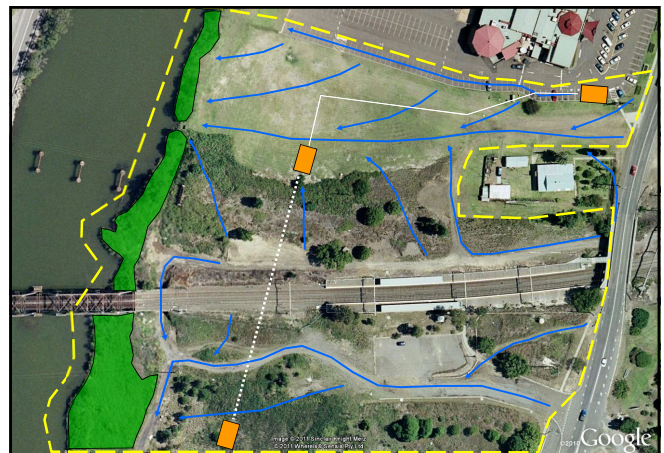
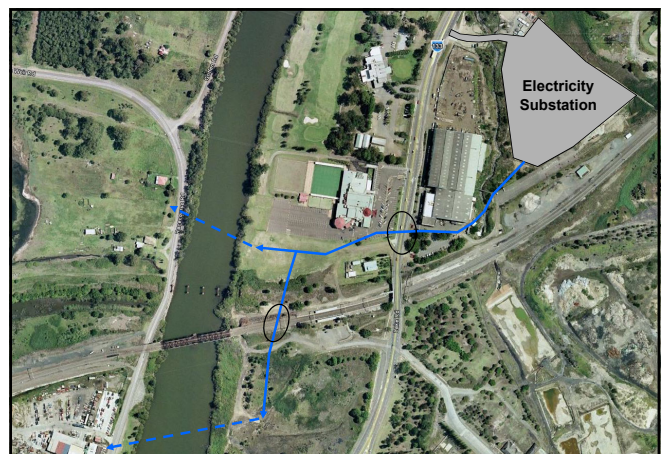
Centre for Environmental Training cet

## Recommended Procedures

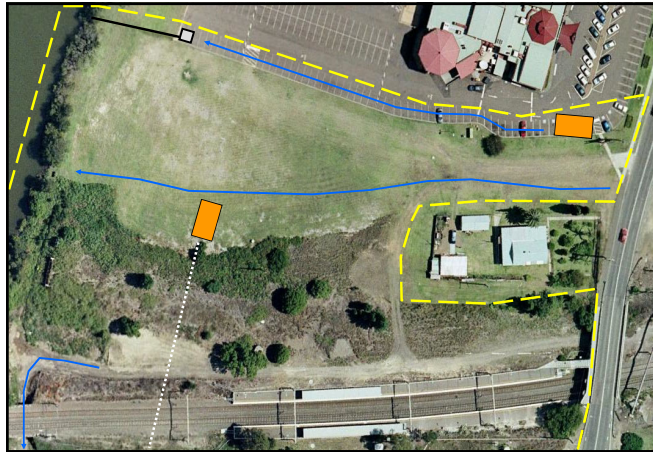
- Select materials handling, transport and disposal methods/dewatering etc
- Assess water quality monitoring requirements
- Determine clean up and rehabilitation procedures
- Prepare E&SC Plan

3

Centre for Environmental Training cet





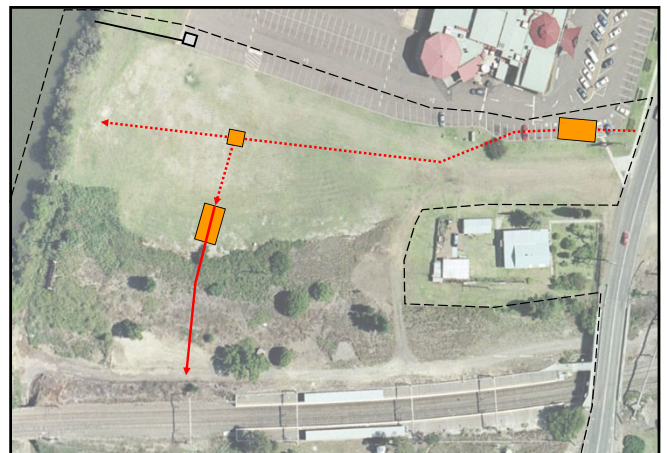


## Group Work

- We will now separate into small groups to look at how we would best apply what we understand of E&SC planning and implementation.
- Remembering:
  - Prioritise Works
  - Manage Water
  - Manage Access
  - Manage Soils and Materials
  - Implement and Maintain Best-Practice measures

8

Centre for Environmental Training



## Prioritise Works

- What are the major issues you identified regarding various activities on the site?
  - Would you stage / phase works?
  - Is there a way to utilise site works for E&SC benefit?
  - Can we utilise off-site areas for managing materials and resources?

13

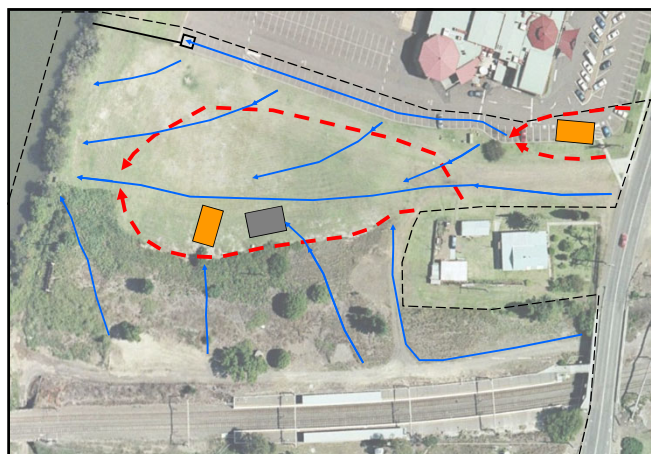
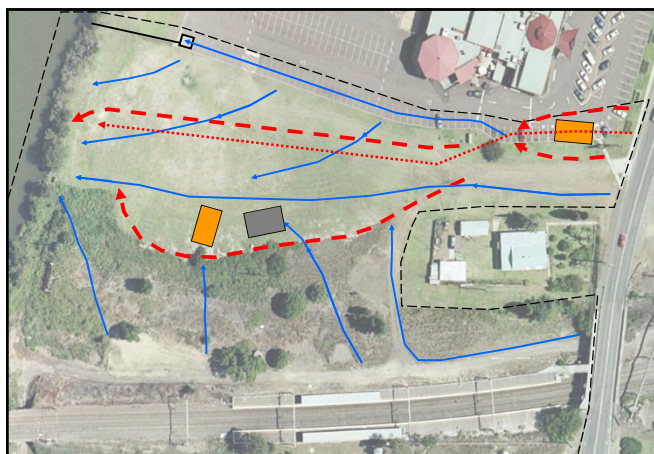
Centre for Environmental Training cet

## Managing Water

- What are the major issues you identified on the site?
  - Run-on water – how do you keep clean and dirty water separate?
  - Stormwater – draining to the creek (car park)
  - Groundwater – dewatering of pits/trenches – what do you do with water drawn from excavations?

14

Centre for Environmental Training cet

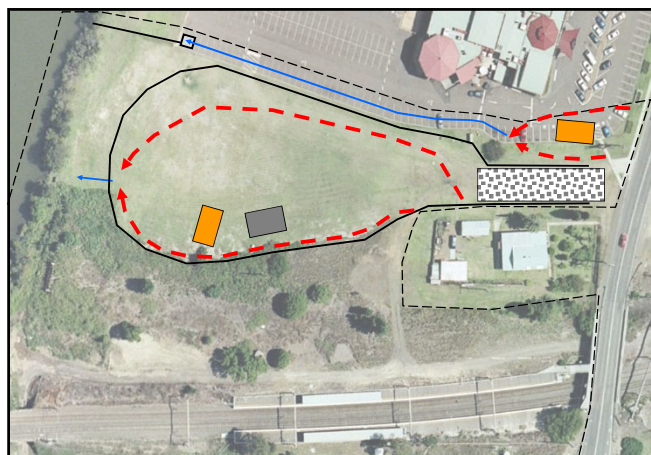


## Managing Access

- What are our primary concerns regarding access to this site?
  - Uncontrolled access
  - Sediment tracking off site
  - Excessive ground disturbance
  - Damage to equipment or injury to unauthorised persons

17

Centre for Environmental Training cet



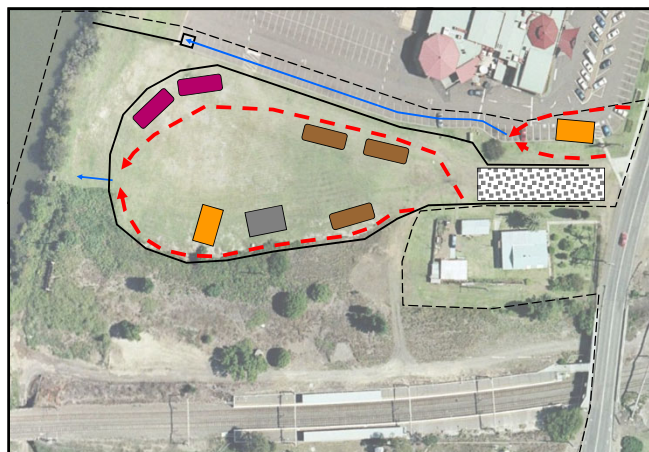


## Managing Soil and Materials

- What type of materials are we likely to expect from this project?
  - Excavated native soils (topsoil/subsoil)
  - Fill or bedding materials
  - Drilling spoils (muds etc.)
  - Construction materials
- Now, how are we going to deal with them?

19

Centre for Environmental Training cet

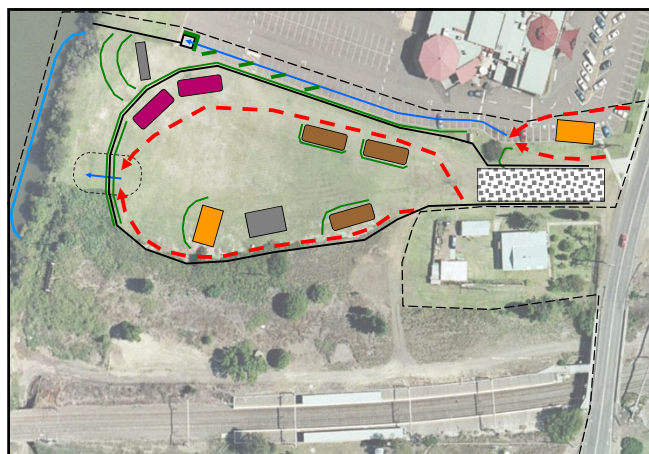


## E&SC Measures

- What types of measures do you feel would be most effective/appropriate for this site?
  - Stabilised Access / Site Controls
  - Diversion / Catch drains
  - Kerb sed traps (sausages) and Inlet Filters
  - Sediment fences (work areas, stockpiles)
  - Dewatering Controls (filter bags etc)
  - Coarse sediment traps or basins
  - Silt Curtain or Boom

21

Centre for Environmental Training cet



## Stage 1 – Planning

Before works start, as a team:

- Review the E&SC Plan or Soil and Water Management Plan and discuss individual responsibilities
- Identify key site features and specific constraints
- Discuss the proposed erosion and sediment control measures

23

Centre for Environmental Training cet

## Stage 2 – Setup the Site

Prepare the site for construction works:

- Install barrier and sediment fencing to define the work site
- Establish a single stabilised access point
- Divert upslope stormwater
- Install erosion and sediment controls following the E&SC Plan

24

Centre for Environmental Training cet

### Stage 3 – Construction

- Minimise disturbance
- Strip and stockpile topsoil for later use
- Regularly inspect, maintain and repair erosion and sediment controls, installing new controls where necessary as site work proceeds
- Stabilise the site during closure and especially when rain appears likely, paying particular attention to steep slopes and areas of concentrated flow

25

Centre for Environmental Training cet



### Stage 4 – Rehabilitation

- Progressively rehabilitate disturbed lands following the E&SC Plan
- Remember – water and fertiliser for newly established vegetation!
- Follow-up inspections, replacement planting, ensure erosion hazard has been reduced to acceptable levels

26

Centre for Environmental Training cet







### Silt Boom Deployment

34

Centre for Environmental Training cet