


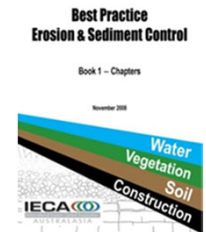
## What's in the IECA Manual?

1


Centre for Environmental Training 

## The IECA Manual

- Best Practice Erosion and Sediment Control, IECA (2008)
- <https://www.austieca.com.au/publications/best-practice-erosion-and-sediment-control-bpesc-document>



2

Centre for Environmental Training 

## IECA Best Practice Erosion & Sediment Control

- Book 1 – Principles, planning, design standards, site management and preparing plans
- Book 2 (Appendices) – Hydrology and hydraulics, basin design, soils, soil loss calculation, erosion hazard assessment
- Book 3 (Appendices) – Building sites, in-stream works, road and rail construction, access tracks, service installation

3

Centre for Environmental Training 

## IECA Best Practice Erosion & Sediment Control

- Book 4 – Design Fact Sheets for a range of commonly used BMPs, drainage and construction techniques
- Book 5 – Erosion and Sediment Control – “A Field Guide for Construction Site Managers”. Also “Field Guide for Builders”
- Book 6 – Standard technical drawings for a range of commonly used BMPs, drainage and construction techniques

4

Centre for Environmental Training 

## Book 1 Contents

- Chapter 1. Introduction
- Chapter 2. Principles of Erosion and Sediment Control
- Chapter 3. Site Planning
- Chapter 4. Design Standards and Techniques Selection
- Chapter 5. Preparation of Plans
- Chapter 6. Site Management
- Chapter 7. Site Inspection
- Chapter 8. Bibliography

5

Centre for Environmental Training 

## Book 2 Contents

- Appendices:
  - A. Construction site Hydrology and Hydraulics
  - B. Sediment Basin Design and Operation
  - C. Soils and Revegetation
  - D. Example Plans
  - E. Soil Loss Estimation
  - F. Erosion Hazard Assessment
  - G. Model Code of Practice

6

Centre for Environmental Training 

### Book 3 Contents

Appendices:  
H. Building Sites  
I. Instream Works  
J. Road and Rail Construction  
K. Access Tracks and Trails  
L. Installation of Services  
M. Erosion Processes  
N. Glossary of Terms  
X. Index (Books 1-3)

7

Centre for Environmental Training 


### Book 4 Contents

Book 4  
Technique Fact Sheets (electronic only)  
<https://www.austieca.com.au/publications/book-4-design-fact-sheets>

136 fact sheets grouped under the following headings:

- Drainage control measures
- Erosion control measures
- Sediment control measures
- De-watering sediment control measures
- In-stream flow and sediment control
- Miscellaneous

8

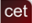
Centre for Environmental Training 

### Book 5 for Construction Site Managers

Book 5 – Erosion and Sediment Control – “A Field Guide for Construction Site Managers” (electronic only)  
<https://www.austieca.com.au/publications/book-5-field-guides>



9


Centre for Environmental Training 

### Book 5

This field guide has been prepared specifically to:

- Provide construction site managers with general guidelines on the management of construction sites with respect to soil erosion and sediment runoff
- Provide construction site personnel with general guidelines on the selection of appropriate construction phase drainage, erosion and sediment controls in the following circumstances:
  - Situations where an appropriate Erosion and Sediment Control Plan (ESCP) does not exist, or does not adequately address the current site conditions; and
  - Situations where the existing erosion and sediment control (ESC) practices are failing to achieve the required environmental protection, and site personnel are awaiting instructions from ESC experts and/or the approval of a revised ESCP.

10

Centre for Environmental Training 

### Book 5 for Builders

Book 5 – Builders Field Guide (electronic only)  
<https://www.austieca.com.au/publications/book-5-field-guides>



11


Centre for Environmental Training 

### Book 5

This field guide has been prepared specifically to:

- Provide builders with the general guidelines on the management of building sites with respect to soil erosion and sediment run-off;
- Provide building contractors with the general guidelines on the selection of appropriate drainage, erosion, and sediment control measures for small, single-dwelling, building sites.
  - The field guide has been prepared primarily for small, single-dwelling building sites. As such, it is not necessarily applicable to multiple-dwelling building sites or civil construction sites, but all building and construction sites do share common principles of stormwater management, and erosion and sediment control.

12


Centre for Environmental Training 

## Book 6 Contents

Book 6  
Standard Drawings (electronic only)  
<https://www.austieca.com.au/publications/book-6-standard-drawings>

Book 6 consists of 136 individual A4 standard drawings of various ESC techniques. The standard drawings consist of diagrams displaying typical installation layout and dimensions and specifications for the materials, installation, maintenance and removal. Standard drawings are available for 92 different ESC techniques.

13

Centre for Environmental Training 

## Questions the IECA Manual Answers

- What sort of plan do I need?
- What should go in my ESCP?
- How do I assess my site for constraints, opportunities and erosion risk?
- What is RUSLE and how do I calculate Soil Loss Class?
- Where do I find the data I require?
- What erosion controls should I use?
- What sediment controls should I use?
- How do I stabilise my site?
- How do I maintain my site?

14

Centre for Environmental Training 