

Site Planning Exercise

1

Centre for Environmental Training cet

Recommended Procedures

- Assess need for and extent of works
- Initial site assessment
- Determine timing of works
- Control water movement in and around site
- Select erosion control measures
- Select sediment control measures

2

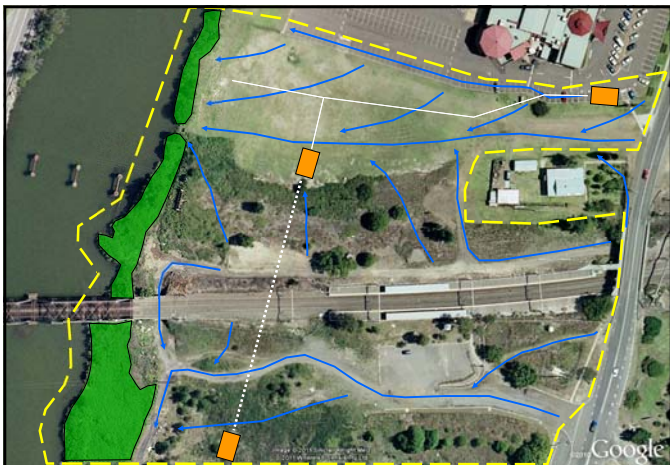
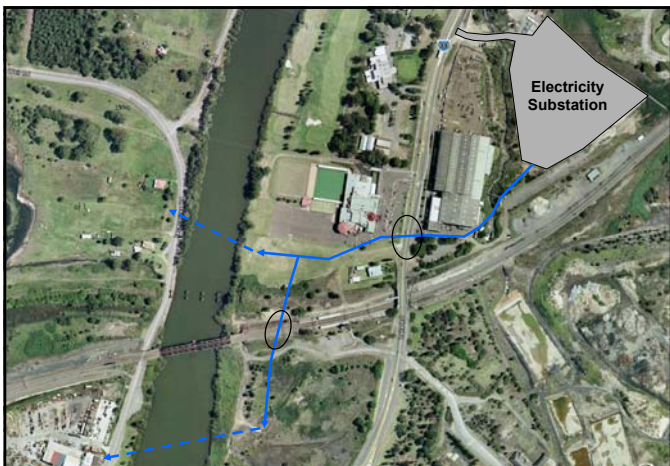
Centre for Environmental Training cet

Recommended Procedures

- Select materials handling, transport and disposal methods/dewatering etc.
- Assess water quality monitoring requirements
- Determine clean up and rehabilitation procedures
- Prepare E&SC Plan

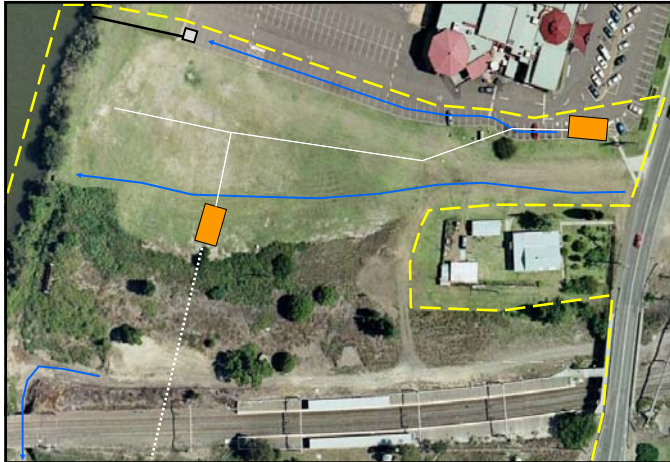
3

Centre for Environmental Training cet



Practical Erosion and Sediment Control for the Workforce

5 October 2022

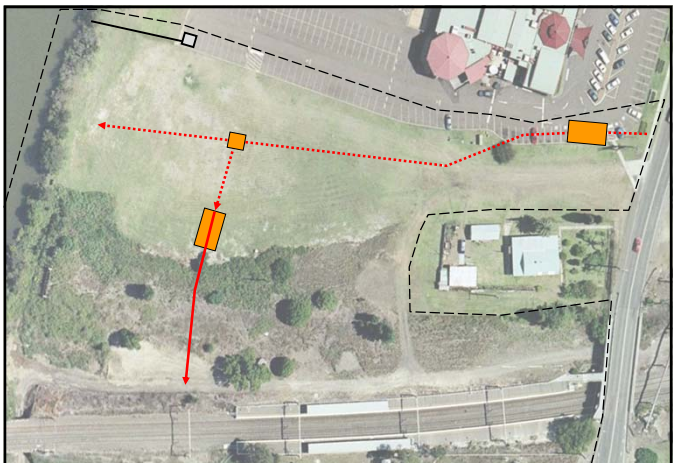


Group Work

- We will now separate into small groups to look at how we would best apply what we understand of E&SC planning and implementation.
- Remembering:
 - Prioritise Works
 - Manage Water
 - Manage Access
 - Manage Soils and Materials
 - Implement and Maintain Best-Practice measures

8

Centre for Environmental Training 



Prioritise Works

- What are the major issues you identified regarding various activities on the site?
 - Would you stage / phase works?
 - Is there a way to utilise site works for E&SC benefit?
 - Can we utilise off-site areas for managing materials and resources?

13

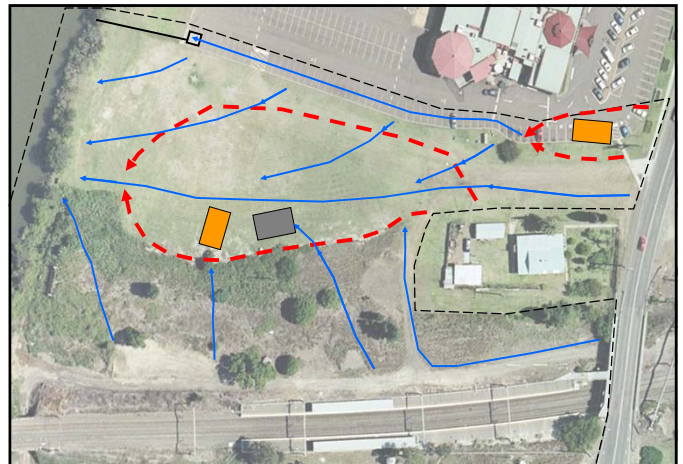
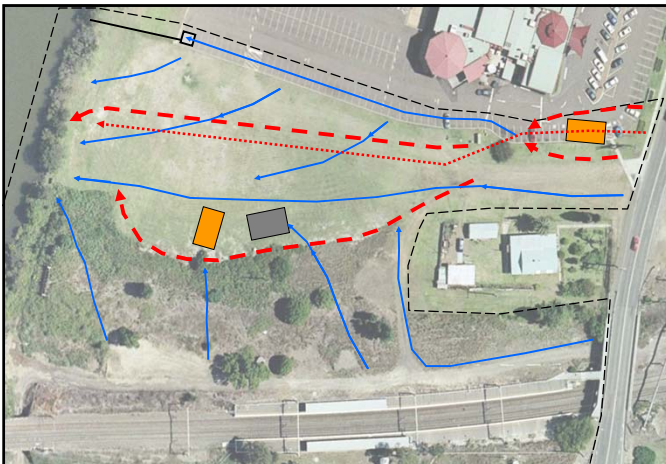
Centre for Environmental Training cet

Managing Water

- What are the major issues you identified on the site?
 - Run-on water – how do you keep clean and dirty water separate?
 - Stormwater – draining to the creek (car park)
 - Groundwater – dewatering of pits/trenches – what do you do with water drawn from excavations?

14

Centre for Environmental Training cet

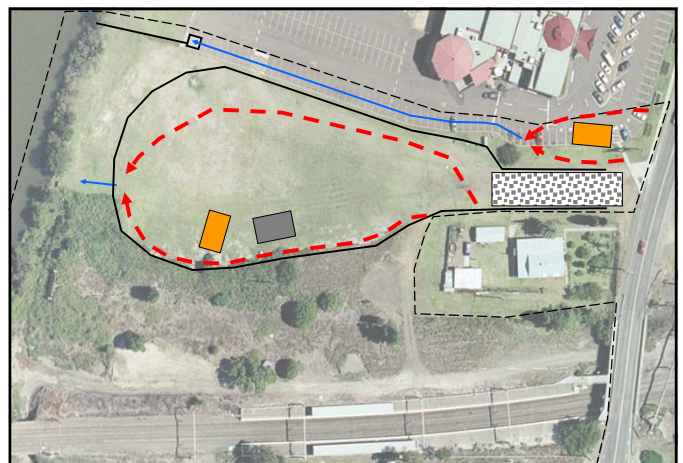


Managing Access

- What are our primary concerns regarding access to this site?
 - Uncontrolled access
 - Sediment tracking off site
 - Excessive ground disturbance
 - Damage to equipment or injury to unauthorised persons

17

Centre for Environmental Training cet

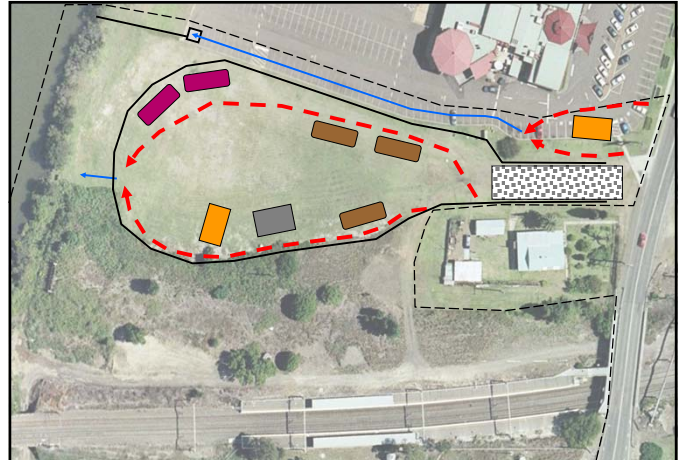


Managing Soil and Materials

- What type of materials are we likely to expect from this project?
 - Excavated native soils (topsoil/subsoil)
 - Fill or bedding materials
 - Drilling spoils (muds etc.)
 - Construction materials
- Now, how are we going to deal with them?

19

Centre for Environmental Training cet

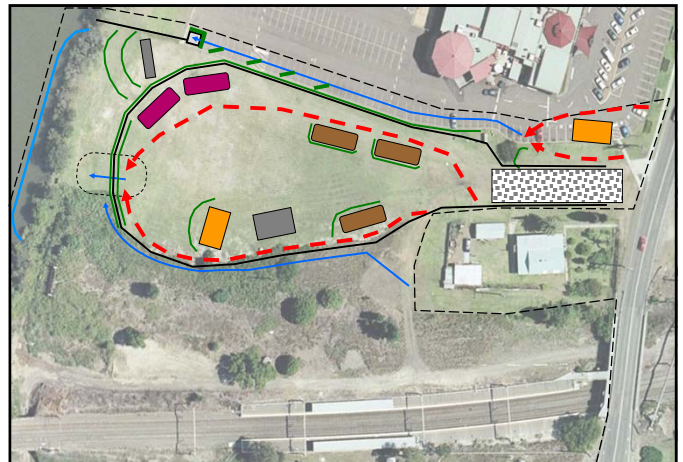


E&SC Measures

- What types of measures do you feel would be most effective/appropriate for this site?
 - Stabilised Access / Site Controls
 - Diversion / Catch drains
 - Kerb sed traps (sausages) and Inlet Filters
 - Sediment fences (work areas, stockpiles)
 - Dewatering Controls (filter bags etc.)
 - Coarse sediment traps or basins
 - Silt Curtain or Boom

21

Centre for Environmental Training cet



Stage 1 – Planning

Before works start, as a team:

- Review the E&SC Plan or Soil and Water Management Plan and discuss individual responsibilities
- Identify key site features and specific constraints
- Discuss the proposed erosion and sediment control measures

23

Centre for Environmental Training cet

Stage 2 – Setup the Site

Prepare the site for construction works:

- Install barrier and sediment fencing to define the work site
- Establish a single stabilised access point
- Divert upslope stormwater
- Install erosion and sediment controls following the E&SC Plan

24

Centre for Environmental Training cet

Practical Erosion and Sediment Control for the Workforce

5 October 2022

Stage 3 – Construction

- Minimise disturbance
- Strip and stockpile topsoil for later use
- Regularly inspect, maintain and repair erosion and sediment controls, installing new controls where necessary as site work proceeds
- Stabilise the site during closure and especially when rain appears likely, paying particular attention to steep slopes and areas of concentrated flow

25

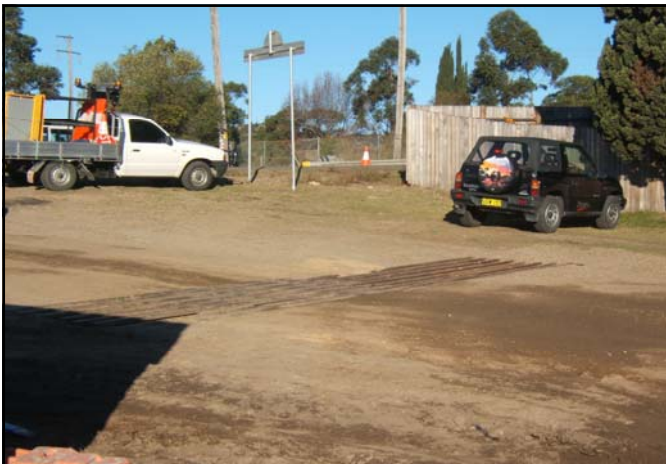
Centre for Environmental Training cet

Stage 4 – Rehabilitation

- Progressively rehabilitate disturbed lands following the E&SC Plan
- Remember – water and fertiliser for newly established vegetation!
- Follow-up inspections, replacement planting, ensure erosion hazard has been reduced to acceptable levels

26

Centre for Environmental Training cet



Practical Erosion and Sediment Control for the Workforce

5 October 2022



Silt Boom Deployment



34

Centre for Environmental Training cet